



KENT ROAD PUBLIC SCHOOL

BLUE GUM NEWS

Kent & Herring Roads, EASTWOOD 2122 T:9878 2884 E: kentroad-p.school@det.nsw.edu.au

Term Two Week 1

Friday 29th April 2022

Important Dates & Notes

PSSA
Please check
the compass
app for more
information

Dates To Note

Term Dates

Term Two

Wed 27-04-2022 -
Fri 1-07-2022

Term Three

Tue 19-07-2022 -
Fri 23-09-2022

Term Four

Mon 10-10-2022 -
Mon 19-12-2022

Dear Kent Road Parents and Carers,

Welcome back to Term Two. I hope everyone had the chance to enjoy some sunshine over the past two weeks. I certainly did and my garden looks much better for it!

I would like to extend a warm welcome to our new families. I hope you will soon feel a part of the Kent Road community.

SCHOOL PHOTOS

The School Photographer will return to Kent Road next **Tuesday 3rd May** to complete the individual and sibling photographs for the students who were absent on photo day last term. Please ensure students are dressed appropriately in school uniform.

TEACHERS' INDUSTRIAL ACTION – WEDNESDAY 4th MAY

On Wednesday 4th May the NSW Teachers Federation has called for industrial action.

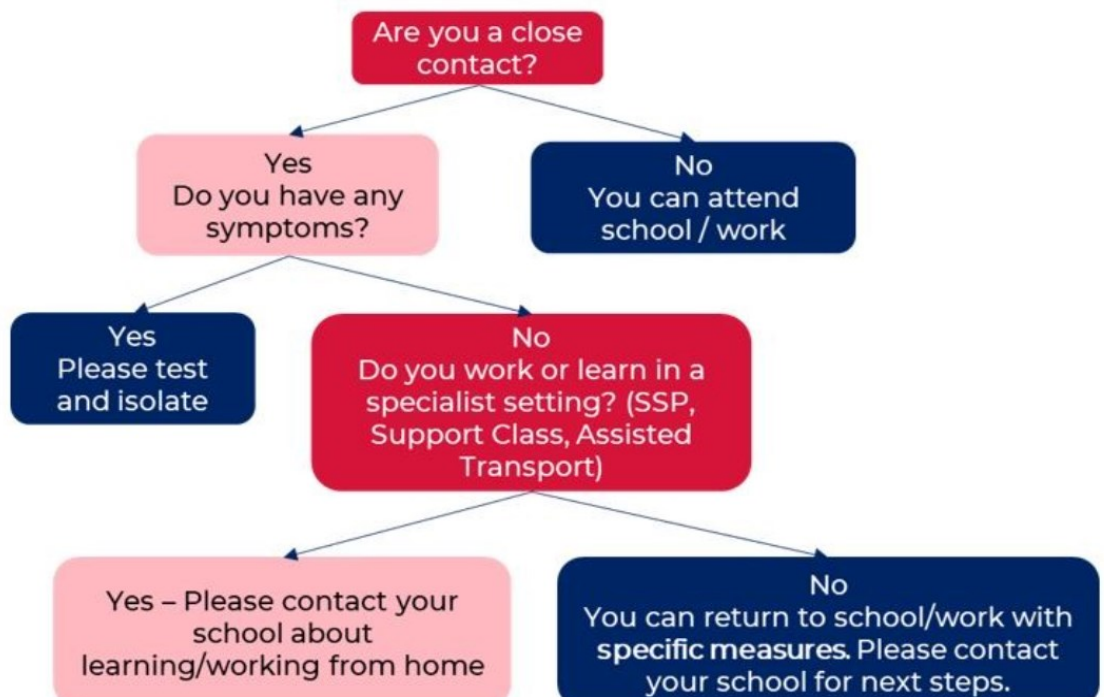
Kent Road Public School will remain open for students who cannot be cared for at home.

There will be minimal supervision provided at school. Minimal supervision means there will be some teachers at school to supervise students however temporary class structures and a modified timetable will be implemented to meet safety and supervision requirements.

CHANGES TO COVID RULES

Last week the NSW government announced changes to the Public Health Orders. An outline of these changes to close contact rules is attached. Please continue to notify the school if your child is a close contact.

Before considering whether to return to school or work, please use the decision tree that follows to assist with whether it is appropriate.



ANZAC DAY DAWN SERVICE

Thank you to our student leaders and Ms Hamilton for representing the school at the North Ryde RSL Club's ANZAC Day Dawn Service on Monday. The School Captains laid a wreath on behalf of our school.

**YEARS 3-6 ASSEMBLY**

Next Friday 5th May we will have an assembly for students in Years 3-6 at 9.10am-9.45am.

Parents are welcome to attend but please be mindful of the requirement to not enter the school if unwell.

COVID SAFETY MEASURES – TERM TWO

Below is an outline of the NSW Government's covid-safe rules for Term 2. Some pre-existing COVID-smart measures will continue this term, including:

- rapid antigen testing for symptomatic students and staff
- vaccinations – including booster shots (from 3 months after your child's primary COVID-19 dose) are encouraged for all eligible students and their families. Staff and volunteers on school grounds are to follow vaccination guidelines
- ventilation
- good hygiene practices
- enhanced cleaning.

What's new in Term 2?

As we head into the cooler months, our COVID-smart measures have been updated in consultation with NSW Health, to provide additional protection to our school community.

Change to close contact isolation requirements

On 20 April the NSW Premier announced that from 6pm 22 April 2022, close contacts (including household contacts) could leave home isolation with certain restrictions. The announcement means that **from Week 1 of Term 2, students and staff who are identified as close contacts will be able to attend school with the following risk mitigations in place:**

- **You must notify the school** (including their outside of school hours care provider) if you are intending to return to school.
- **You/your child should conduct a daily rapid antigen test (RAT) and receive a negative result each morning before attending school for 5 subsequent school days** as part of your personal responsibility to minimise the risk of transmission.
- **Staff members** and high school students **must wear a mask indoors at all times** except when eating or exercising. **Primary school students are recommended to wear a mask indoors at all times** (except when eating or exercising).

No student or staff member identified as a close contact will be permitted to participate in overnight excursions, including school camps.

Visitors in contact with students including volunteers, and staff providing professional learning who are close contacts should conduct a daily RAT and return a negative result before attending a school site.

Visitors must also wear a mask indoors at all times if they are 12 years old or over. If attending a school site and interacting with students for an extended period of time, the visitor should advise the school that they are a close contact.

In line with these changes, students with health conditions should speak with their treating medical practitioner or specialist to review their health support plan or COVID-19 action plan and speak with the school around any local considerations.

Rapid Antigen Tests (RATs)

The department will continue to supply RAT kits to students and staff to support symptomatic testing and testing for close contacts returning to school (as mentioned above). Within the first three weeks of term we will provide 1 multipack of rapid antigen tests per student and staff member.

Once these department-supplied RATs are exhausted, please continue to access PCR tests and store-purchased RATs which are now readily available in the community.

Masks

The latest NSW Health advice recommends wearing a mask for people who have recovered from COVID-19 and recently completed their 7-day isolation period **for an additional 3 days** (from days 8 to 10 after receiving a positive COVID-19 result).

Additionally, as outlined in the above section on close contacts, mask wearing is mandatory for staff and high school students returning to school as close contacts for 5 days and recommended for primary school students returning to school as close contacts for 5 days. Where students or staff are unable to wear a mask, they should be supported to learn or work remotely.

Responding to our local situation

We will continue to liaise with NSW Health and the department's Health and Safety case management team to ensure our COVID-smart settings keep-up with the latest developments. If local conditions require it, this may mean temporarily reintroducing some additional COVID-smart settings including:

- mask wearing for all staff and students in Year 7 and above

- directing cohorts to learn from home for short periods of time

- postponing or limiting non-essential activities like excursions, indoor assemblies and visitors to the school.

We will make sure to update you at the earliest opportunity if any of these additional measures are required in Term 2.

Ventilation

The NSW Department of Education is reviewing environmental differences across NSW as part of their winter ventilation planning, ensuring that local climatic conditions at each school are considered. The department will provide local guidance to schools, including advice on maximising natural ventilation while balancing thermal comfort and the use of indoor and outdoor learning areas for school activities to support schools to adapt to local climate conditions through the winter months.

Reducing the risk of illness this winter

Finally, it's important to note NSW Health's advice to reduce our risk of not only COVID-19, but also other illnesses that may affect our school this winter like the flu. We can all protect our loved ones and our community by:

- taking a RAT before visiting vulnerable loved ones or going to large gatherings and events.

- staying home if unwell

- keeping up to date with our vaccinations – including the flu vaccine, which is available from your local GP, pharmacy or Aboriginal Medical Service now. Flu vaccines are free for all children aged 6 months to under 5 years, or for a small charge for those aged 5 years and older

- getting tested immediately for COVID-19 if you become symptomatic and isolating until you receive a negative result

- practicing good hand hygiene by washing regularly with soap and water

Masks

The latest NSW Health advice recommends wearing a mask for people who have recovered from COVID-19 and recently completed their 7-day isolation period **for an additional 3 days** (from days 8 to 10 after receiving a positive COVID-19 result).

Additionally, as outlined in the above section on close contacts, mask wearing is mandatory for staff and high school students returning to school as close contacts for 5 days and recommended for primary school students returning to school as close contacts for 5 days. Where students or staff are unable to wear a mask, they should be supported to learn or work remotely.

Responding to our local situation

We will continue to liaise with NSW Health and the department's Health and Safety case management team to ensure our COVID-smart settings keep-up with the latest developments. If local conditions require it, this may mean temporarily reintroducing some additional COVID-smart settings including:

- mask wearing for all staff and students in Year 7 and above

- directing cohorts to learn from home for short periods of time

- postponing or limiting non-essential activities like excursions, indoor assemblies and visitors to the school.

We will make sure to update you at the earliest opportunity if any of these additional measures are required in Term 2.

Ventilation

The NSW Department of Education is reviewing environmental differences across NSW as part of their winter ventilation planning, ensuring that local climatic conditions at each school are considered. The department will provide local guidance to schools, including advice on maximising natural ventilation while balancing thermal comfort and the use of indoor and outdoor learning areas for school activities to support schools to adapt to local climate conditions through the winter months.

Reducing the risk of illness this winter

Finally, it's important to note NSW Health's advice to reduce our risk of not only COVID-19, but also other illnesses that may affect our school this winter like the flu. We can all protect our loved ones and our community by:

- taking a RAT before visiting vulnerable loved ones or going to large gatherings and events.

- staying home if unwell

- keeping up to date with our vaccinations – including the flu vaccine, which is available from your local GP, pharmacy or Aboriginal Medical Service now. Flu vaccines are free for all children aged 6 months to under 5 years, or for a small charge for those aged 5 years and older

- getting tested immediately for COVID-19 if you become symptomatic and isolating until you receive a negative result

- practicing good hand hygiene by washing regularly with soap and water

ANZAC DAY



Thank you to our school leaders and their parents who got up early and gathered at 6.30 am near the oval at North Ryde RSL with Ms Hamilton to march in their Anzac Day dawn service. All of our leaders attended and held the school banner as we marched to the rose garden at North Ryde RSL. Here, we listened as local organisations spoke and remembered the many people who have been touched by war in our community. School Captains, Charlotte, Vanessa and Kyce then laid a wreath on behalf of Kent Road Public School.

Ms Fiona Hamilton



Kent Road Students getting ready for the Anzac Day march as the sun rises.



Laying the Wreath



Mr Gordon MacPherson addressing the crowds



The Last Post



High Performing Students Team

Applying for Year 5 entry to an opportunity class in 2023

Once you complete and submit your application you can change details, send and receive messages through your application dashboard.

Thinking of applying for Year 5 entry to an opportunity class in 2023?

You must apply online at:

<https://education.nsw.gov.au/public-schools/selective-high-schools-and-opportunity-classes/year-5>



Key dates

Application website opens:

Tuesday 26 April 2022

Application website closes:

5pm, Friday 13 May 2022

You must apply before this deadline

Test centre advice sent:

Thursday 14 July 2022

Opportunity Class Placement Test:

Thursday 28 July 2022

Placement outcome information

released overnight on:

Friday 7 October 2022

**Please read this document
carefully before applying.**

Parents* monitor the Department's website regularly for updates throughout the application and placement process at:
<https://education.nsw.gov.au/public-schools/selective-high-schools-and-opportunity-classes/year-5>

Please check the Department's website for information before you contact the Team.

The opportunity class placement process for Year 5 entry is administered by the High Performing Students Team[^].

Contact Details:

High Performing Students Team, NSW Department of Education

Email: ssu@det.nsw.edu.au

Telephone: 1300 880 367 Telephone Interpreter Service: 131450

Postal Address: GPO Box 33, SYDNEY, NSW 2001

Facebook: <https://www.facebook.com/groups/159342048077050>

Please Note:

[^]In this document, the High Performing Students Team is referred to as the Team.

*'Parent' is defined under the Education Act, 1990, as a 'guardian or other person having custody or care of a child'.



Tuesday 3rd May 2022

8:40am – 9:40am

At the Uniform Shop

(Wooden building near gate 5)

**Please sign in at the school office
on your way into the school.**

**If possible, please bring cash with
you for second hand uniforms.**

**There will be 2nd hand uniform shop sales monthly, so look
out for future dates in the school newsletter.**

Mother's Day Stall

Thursday 5th May

All gifts are \$5
& come in a gift bag

Our annual Mother's Day Stall is being held on Thursday the 5th May throughout the morning.

This event provides a fun opportunity for your child to go shopping at school and purchase something special for their Mother, Grandmother or Carer.

There is a broad range of gifts on sale. Each gift is \$5 & will come in a gift bag.

Please make sure to give your child money so they can participate on the day.

The stall will be held at school and class teachers will bring the students down to shop during the morning.

Many thanks,

Kent Road P&C Events Team

4/28/22, 3:06 PM

Mail - Kent Road Public School - Outlook



dolce

school of music

Dolce is a professional music school offering:

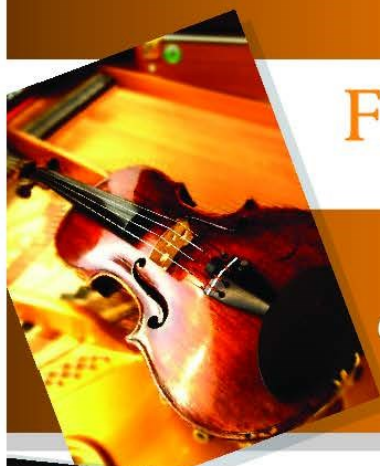
Experienced Teachers from the Sydney Conservatorium of Music

Outstanding results in AMEB Exams and Eisteddfods

Performance Opportunities via Student Concerts

Call now to arrange your**FREE TRIAL LESSON**

*conditions apply

9869 4240**enquiry@dolcemusic.com.au****www.dolcemusic.com.au**

Redeem your **\$100**
CREATIVE KIDS VOUCHER
with Dolce



***Learn Music on Keyboard or Guitar
at School
Enrolment for Term 2***

*Great songs! Musical activities!
Cool music knowledge!*

- Keyboard: kindy - Y6, Guitar: Y2—Y6
- Convenient at-school venue with additional health & safety measures in place
- Small group, 45- min weekly lesson
- Competitive rate
- Instrument not required initially
- Fun introduction to music



**To enrol: www.learnmusicatschool.com.au
(02) 9411 3122**

VIP Music acknowledges awareness & compliance with the health advice regarding COVID-19.





Bricks Challenge is our most popular enrichment program. The overall course objective is to impart theoretical and applied knowledge in the fields of Science, Technology, Mechanical Engineering, and Math (STEM) by using LEGO technic parts and other exciting tools.

Session Duration: 75 minutes, suitable for 1st - 6th Grade

* not available in all schools.



Robo Bricks focuses on exploring the world of Robotics from a professional engineering perspective. Special emphasis on programming solutions will promote the creation of sophisticated and accurate robots to study the fields of Science, Technology, Mechanical and Software Engineering, and Math (STEM) comprehensively.

Session Duration: 75 minutes, suitable for 3rd - 6th Grade

* not available in all schools.



The Robotic and Software Engineering course focuses on exploring the world of robotics from a professional engineering perspective. Special emphasis on programming solutions promotes the creation of sophisticated and accurate robots.

Session Duration: 90 minutes, suitable for 5th & 6th Grade

* not available in all schools.

www.youngengineersaustralia.com.au | contact@young-engineers.com.au

www.YoungEngineersAustralia.com.au

