



# KENT ROAD PUBLIC SCHOOL

## BLUE GUM NEWS

Kent & Herring Roads, EASTWOOD 2122 T:9878 2884 E: kentroad-p.school@det.nsw.edu.au

Term Four Week 10

Monday 6 December 2021

### Important Dates & Notes

**PSSA This  
Friday**  
Please visit our  
website for  
locations

Dear Kent Road Parents and Carers,

This week looks likely to be another disrupted week due to circumstances beyond our control. We apologise for the inconvenience and will keep parents updated as we receive information.

Recent events have shown Kent Road teamwork at its best! I send my thanks to parents who sent the school messages of support; thanks also to Isabella and the class parent team for helping to circulate important messages to parents; and a huge thankyou to the teachers who quickly resumed online lessons where needed and Deputy Principal Mr Harrison who co-ordinated the email communication.

In 2022 we will be changing to a new app for parents to access school information, notify the school of absences and receive alerts. The new app will also provide parents direct access to excursion notes, and access to your child's past reports. Over the past few weeks it was clear we do not have current contact details for all parents. If you have changed your email address or mobile number during the year please send us an email so we can update our records.

### PARENT SURVEYS

#### SCHOOL SATISFACTION

As we reach the end of the school year I ask parents to complete the attached School Satisfaction survey. The results will help us to make plans for the effective delivery of programs in 2022. The survey is very short and will only require a few minutes of your time. Many thanks in anticipation of your responses.

<https://forms.gle/ZonHwvL3D9mD2Ccf7>

#### TRANSPORT SURVEY

Also below is a link to a **Transport Survey**. Schools Infrastructure NSW (SINSW) is undertaking a travel survey across various schools to get a snapshot of travel modes. Kent Road parents are asked to complete the survey, which can be found at this link:

<https://survey.alchemer.com/s3/6608584/Kent-Road-Public-School-Travel-Mode-Survey>

(The timing of this survey is not related to today's bus strike!)

### INDUSTRIAL ACTION – TUESDAY 7<sup>th</sup> DECEMBER

As notified last Friday, parents need to be aware **there will be industrial action tomorrow, Tuesday 7<sup>th</sup> December**.

Whilst some teachers will not be in attendance **the school will remain open**. Students will be placed into grade groups where necessary, under the supervision of Kent Road teachers.

### MUFTI DAY – MONDAY 13<sup>th</sup> DECEMBER

Next Monday 12<sup>th</sup> December we will have class parties. Students are invited to wear mufti (casual, appropriate clothing). Students will receive an iceblock, drink and packet of chips or popcorn provided by the school.

Students should bring their usual lunch. The snacks mentioned above will be provided at morning tea. Students are welcome to bring their own food if preferred.

### Term Dates 2021

#### Term 4

5/10/21—16/12/21

#### Last day for students

Thursday

16th December 2021

**STAFF NEWS**

There will be some teacher changes over the next few days.

We wish **Miss Lindsay** all the very best for her upcoming wedding. She will be on leave for a few days but will return on Tuesday next week.

We wish **Miss Fisher** bon voyage and Merry Christmas as she heads home to England to see her family. Her last day at school will be Wednesday 8<sup>th</sup> December. Ms Kite and Mrs Ezekial will teach 1F over the remainder of the term. Lucky for us, Miss Fisher will return to Kent Road in 2022.

After a very busy and successful term, **Miss Stevenson** will finish work this Friday 10<sup>th</sup> December. We wish Miss Stevenson all the very best for the safe arrival of her baby in a few weeks. KS will be taught by Miss Minard and Mrs Meyers next week.

**EXTENDED LEAVE**

I ask parents who may be travelling in the upcoming holidays who may have a delayed return to school in 2022 to please submit an Application for Extended Leave form.

This will help us with our planning for 2022.

The link to this form is: [Application for Extended Leave \(Travel\)](#) form, and it is also on our website.

**TERM ONE 2022**

Dates for the commencement of the 2022 school year are:

There will be two staff development days at the beginning of the 2022 school year. The school will open for teachers only on Friday 28<sup>th</sup> and Monday 31<sup>st</sup> January 2022.

Students in Years 1-6 in 2022 will start school on Tuesday 1<sup>st</sup> February 2022.

Kindergarten children will start school on Wednesday 2<sup>nd</sup> February 2022.

**SCHOOL UNIFORM – LAST DAYS TO ORDER FOR TERM ONE 2022**

The school uniform shop remains closed except for online orders.

New stock is beginning to arrive. If you have an item on backorder we will be in touch as soon as it is available.

Items that are not the correct size can be returned if the tag is still attached.

I encourage parents who anticipate their child will need new uniform items for Term One 2022 to **place your order as soon as possible**. The suppliers of school uniform are experiencing significant delays with items coming from overseas and the best way of ensuring your child will have the school uniform items they need is to place an order now.

Parents of children starting Kindergarten in 2022 can place an online order for uniform items or a Kindergarten pack.

# CONGRATULATIONS TO THE FOLLOWING GOLD MEDAL RECIPIENTS

## YEAR ONE GOLD MEDAL RECIPIENTS



# Newsletter

## A message from the Manager

As you are aware, our Oshc service was made non-operational for onsite attendance of staff and students last week due to a member of the school community testing positive for COVID-19. The Oshc has been cleaned and disinfected carefully. We are taking every precaution to keep children safe, such as reminding them to wash their hands before eating, after toileting and encouraging more outdoor play. Our staff and students safety and well-being are of the utmost concern to us at all times.

Please check our holiday programs and register with us ASAP to reserve your child's spot.

### Upcoming Vacation Care Dates:

**17<sup>th</sup> – 24<sup>th</sup> December. 21**

**04<sup>th</sup> – 28<sup>th</sup> Jan.22**

# We also serve the community; therefore, we are accepting children from other schools during the school holiday period.

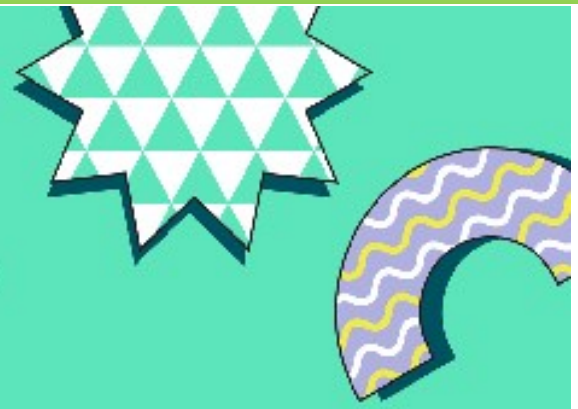
## Highlights from 08.11.21 to 19.11.21

### STRAIGHT FROM THE KITCHEN



## SCIENCE PROJECTS





# Newsletter

**WEEK 9: 22.11.21 TO 26.11.21**

## Message from the Manager:

Dear Families,

After a long wait, I'm sure everyone has begun making plans for the approaching summer vacations and spending time with their loved ones. We'd like to share some of the last week excellent experiences that the children had at OOSH. Last week was "Talent Week," during which students demonstrated their specific abilities such as cooking, writing, singing, playing instruments, and participating in sports.

As Christmas is approaching our activities are aligned with Christmas festivities. Children will be making:

- Sparkling hangings,
- Christmas trees,
- MYO wreath and many more.



**Our little master chefs**



**Children making their own music**



**Sports day: crab race and wheel barrow race**



**Art and craft: creativity & imagination**

## Wings Of Eden - Colouring in Competition and Art Installation

Installation #31 is called The Wings of Eden. It is inspired by international street artist Kelsey Montague, but with an Eden Gardens leafy twist. Standing guard at the entrance, this evolving installation is a collaborative work being created by staff at Eden and the broader community, with local schools and Father Chris Riley's Youth Off The Streets all taking part.

This installation is a "selfie Angel" (perfect for Christmas) with wings made of leaves. The leaves are actually coloured in templates which we are hoping your students might like to complete. I'd be happy to receive coloured in leaves to add to the installation via post or scanned and emailed back, or I can collect them before the end of term.

The colouring in competition and leaf templates can both be found on the link below, along with more information about the exhibition called Eden Unearthed.

[Eden Unearthed– Eden Gardens](#)