



KENT ROAD PUBLIC SCHOOL

BLUE GUM NEWS

Kent & Herring Roads, EASTWOOD 2122 T:9878 2884 E: kentroad-p.school@det.nsw.edu.au

Term Three Week 5

Tuesday 20th August 2020

Important Dates & Notes

PSSA This Friday

Please visit our website for locations

All PSSA sport is now cancelled for Term 3

Yrs2-6 Sports Carnival
20th August

School Photos
Wed 9th & Fri 11th September

Yr1 Incursion
Wed 26th Aug and Thur 27th August

Yr5 Excursion
Thur 17th September

Dear Kent Road Parents and Carers,

Attached to this week's newsletter is the update received yesterday from the NSW Department of Education regarding the latest guidelines to ensure schools remain a safe environment.

It is important that all parents are aware of these requirements and changes.

1 ATTENDANCE

Students who display even mild symptoms of the flu **must not attend school** and **must provide a negative covid-19 test result before returning to school**.

Any student who shows any flu-like symptoms at school will be isolated in sick bay until a family member arrives to take them home. These students **must not return to school** until they provide a negative covid-19 test result.

Wearing a mask at school is optional but it does not allow students to attend school if unwell. **If your child has any flu like symptoms such as a cough, they must not attend school even if wearing a mask.**

2 BANDS AND INSTRUMENT LESSONS

All face to face band rehearsals have been cancelled for the rest of Term Three.

All instrument lessons at school have been cancelled for the remainder of Term Three.

Our music teachers, Miss Lee and Miss Koefler are working hard to contact conductors and tutors to make arrangements for online lessons wherever possible. We will notify parents as soon as arrangements are in place.

3 PSSA CANCELLED

Further information from the Ryde PSSA arrived late yesterday. PSSA has been cancelled for the remainder of Term Three.

We are very disappointed to have to cancel these school activities as we know how much students look forward to participating in them. We all agree though, that we need to accept these changes so that everyone remains well and hopefully if everyone follows the rules it will speed up our eventual return to normal activities.

Parents will be contacted soon regarding PSSA payments.

FOCUS on TEAMWORK

This week our character strength is **teamwork**. Students are focusing on what makes a person a good team member, what makes someone a bad loser or a bad winner, and how to demonstrate good teamwork.

If parents would like to investigate the strong minds program there is parent information and resources available at:

<https://growingstrongminds.com/my-account/join-team/3532ef065e81e3b2e416bf867d67b781>

CLASS AWARDS and GOLD MEDAL RECIPIENTS

Last Friday the following students received their Gold Medals after earning 72 green cards.

Congratulations to:

★ Ariana	Yr 5		★ Hugo	Yr 5
★ Aliyah	Yr 2		★ Richard	Yr 2
★ Jacob	Yr 2		★ Melissa	Yr 1
★ Joanna	Yr 1		★ ★ ★ ★ ★ ★ ★ ★ ★ ★ ★ ★ ★ ★	



SCHOOL NEWS



*Congratulations
to our
Gold Medal
winners!*



CLASS MERIT CERTIFICATES

Congratulations also to the following students who received a class merit certificate for their engaged learning, respectful behavior and showing responsibility at school.

Jessica	KC	For consistently trying her best in all subject areas
Ethan	KF	For showing enthusiasm during Drama performances
Zahra	KH	For writing a fantastic retell of The Three Little Pigs
Evie	KJ	For writing an excellent recount of the Three Billy Goats Gruff
Harry	KK	For consistently trying his best during Reading
Asha	KL	For always working hard and producing work of a high quality
Victor	KS	For always producing high quality work
Bowen	1F	For impressive reading and comprehension during Literacy groups
Anand	1H	For an amazing improvement in his writing
Austin	1IK	For writing super sentences with adjectives during Literacy activities
Oliver	1K	For always being a kind and caring member of the class
Virika	1S	For impressive work during Literacy groups
Lydia	1V	For writing an impressive information report about ants
Rowan	2C	For thoughtfully thinking about things he's grateful for
Keyaan	2H	For enthusiastic responses during guided reading
Milan	2C	For making excellent connections to the text in Literacy groups
Jiyoon	2I	Always trying her best in all activities
Serena	2P	For being a kind and responsible class member at all times
Benjamin	2S	For always contributing his clever ideas to class discussions
Aarya	3C	Effort and engagement in Writing
Madina	3G	For working hard in all areas
Chanelle	3J	A detailed and descriptive sensory poem
Kevin	3L	Always trying his best during Writing sessions
Chloe	3M	Creating a detailed Wild Robot artwork
Aidan	4B	Engagement and creativity in Writing
Phillip	4C	Writing a wonderful description of The Storm
Minji	4K	Working diligently and enthusiastically on her reading goal
Ryan	4R	His descriptive paragraph about The Storm
Joshua	5L	For being a responsible and respectful member of the class
Tanisha	5M	For improvement and focus in Writing
Maximo	5S	For using wonderful expression during Drama
Gabriel	6B	For being a determined and engaged learner
Veronica	6N	Taking initiative and displaying good leadership skills in preparation for NAIDOC Wk
Brendan	6P	Always working hard and going the extra mile without being asked
Ivan	6W	Thoughtful and enthusiastic contributions to class discussions

STAFF NEWS

Congratulations to Miss Josling on the safe arrival of her beautiful baby last Wednesday. Her little son was in a hurry to make his appearance and Miss Josling finished the school week a little earlier than we had anticipated. I am happy to report Miss Josling and her son, Lennox, are doing well!

ENROLMENT 2021

For parents of children starting Kindergarten in 2021, we are developing plans to present online orientation sessions some time during Term Four. I hope this may provide an opportunity for new parents to learn a little about our Kindergarten program and our school. More information will be available in coming weeks.

Parents should be aware there are changes in the school catchment boundaries. To check the local school for your address parents can google NSW school finder, type in your address and it will indicate the local school for your child this year and in 2021.

Enrolment forms for Kindergarten 2021 are now being accepted. Parents who have a child who will commence Kindergarten in 2021, that is a child who will turn five before 31st July, should complete an Application to Enrol form which is available on our website, and also from the front office.

PHYSICAL DISTANCING

I ask all parents, grandparents and carers who collect students from school to respect the government directions that **we must maintain 1.5 metres apart outside the school and when collecting children.**

Parents must not use the student toilets (at any time).

Parents must not wait in the playground whilst their child plays in the school grounds.

These requirements are necessary to keep all students, parents and teachers safe.

Apart from visiting the administration office, walking through to collect Kindergarten and Year One students, and attending the before and after school centre, parents must remain outside the school gates unless approval has been provided.

Denise Minifie

Principal

KINDERGARTEN NEWS



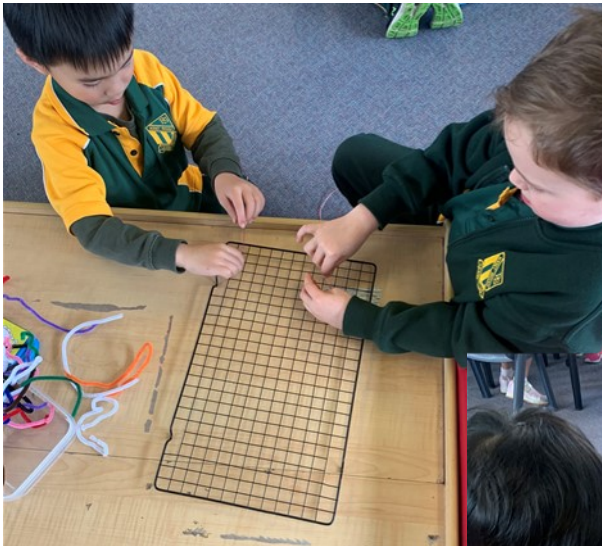
In KH/KF we have been working on our mathematical way of thinking. From developing our problem solving skills, creating patterns, counting numbers, and working with our friends in groups building our teamwork skills.



KINDERGARTEN NEWS

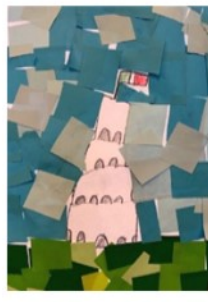
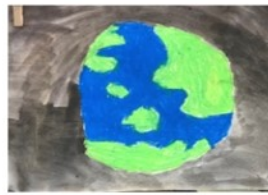


We have been having lots of fun learning new games like snap, dominoes and practicing our threading where students all work together helping one another.



This term in Geography and Art we have been studying 'Around the World'. Each week in Art we have been creating an Artwork based on a different country.

So far, we have created the Earth, aeroplanes, the Leaning Tower of Pisa, African sunsets and Penguins from Antarctica.



We have enjoyed learning all of the continents and oceans. We also know a very catchy song to help us remember. We have also been using Atlas' to find out new information about the world. We can't wait to see what else we will create this term.

WINTER PSSA Week 4 RESULTS				
PSSA SPORT	WIN/LOSS	SCORE		Player of the Match
Junior A Netball	LOSS	KR: 3 WEST RYDE: 11		Vanessa N
Junior B Netball	LOSS	KR: 3 WEST RYDE: 7		Mia Y
Senior A Netball	WIN	KR: 32 WEST RYDE: 5		Simone Z
Senior B Netball	WIN	KR: 14 WEST RYDE: 5		Olivia S
Junior AFL – A	Win	DEPS 16	KRPS 26	Xavier A
Junior AFL – B	Loss	DEPS 39	KRPS 6	Jayden C
Senior AFL – A	Loss	DEPS 18	KRPS 12	James L
Senior AFL – B	Win	REPS 0	KRPS 70	Wasi R

. Tennis Lessons at Kent Road Public School

Before and after school tennis lessons will be conducted at the school tennis court commencing in week 1 Term 3.

The classes will run on a term by term basis and cater for beginner, Intermediate and advanced students.

Class times Mornings- 7.30am to 8.30am Intermediate and advanced levels.

8.30am to 9am Beginners (K-3)

Classes will be conducted by Tennis Australia and ATPCA accredited coaches. All lessons will be on regardless of weather conditions.

**Enquiries and enrolments for Term 3 can be made to
Scott Gregson 0414554612**

Help us do better

The *Tell Them From Me* parent survey is your chance to let us know how we are doing.



Complete the survey

<http://nsw.tellthemfromme.com/krps20>

Open

Closes



17 August 2020

16 October 2020

Your results will help us



Build a
better school



Improve the
family experience



Allocate our resources
to better support our
students

BEFORE/AFTER SCHOOL ACTIVITIES AT KENT ROAD PUBLIC SCHOOL Term 3 2020

<p>MONDAY Before School</p> <p>The Hub Dance 0424 171 649 2H/2C 7.45am-8.45am Yr2 Girls Dance Group</p> <p>Kindy Dance Grp with Miss Jess 0410 883 141 KF/KH 8.00am-8.45am</p> <p>VIP Music 9411 3122 5S Keyboard: 8.15am-9.00am</p>	<p>MONDAY After School</p> <p>Maggies Art Class 0412 895 125 3J, 4B, 4C 3.15pm-5.00pm</p> <p>Gregson's Tennis Advantage 0414 554 612 Tennis Court 3.10pm-4.00pm Kindergarten and Yr 1</p>
<p>TUESDAY Before School</p> <p>The Hub Dance 0424 171 649 2H/2C 7.45am-8.45am Yr3 & 4 Girls Dance Group</p> <p>VIP Music 9411 3122 Guitar: 8.15am-9.00 5M</p>	<p>TUESDAY After School</p> <p>VIP Music 9411 3122 5L Keyboard: 3.15pm-4.00</p>
<p>WEDNESDAY Before School</p> <p>Gregson's Tennis Advantage 0414 554 612 Tennis Court 7.30am-9.00am</p>	<p>WEDNESDAY After School</p> <p>Writing Workshop 0468 543 933 3M Yrs1-6 3.15pm-6.15pm</p> <p>kids upfront drama academy 9953 4040 ELS Hall</p> <p>Coding For Kids 0452 525 453 4C Yrs 2-4 3.15pm-4.15pm Yrs 4-6 4.25pm-5.25pm</p>
<p>THURSDAY Before School</p> <p>The Hub Dance 0424 171 649 2H/2C 7.45am-8.45am Yr1 Girls Dance Group</p>	<p>THURSDAY After School</p> <p>Chinese School Yr1-2 - Online 3.30pm-5.00pm 0411 582 388.</p> <p>VIP Music 9411 3122 5W Keyboard: 3.15pm-4.00</p>
<p>FRIDAY Before School</p> <p>The Hub Dance 0424 171 649 2C/2H 7.45am-8.45am Yr5 & 6 Girls Dance Group</p> <p>The Hub Dance 0424 171 649 Hall 7.45am-8.45am Boys Dance Group</p> <p>Gregson's Tennis Advantage 0414 554 612 Tennis Court 7.30am-9.00am</p>	<p>FRIDAY After School</p> <p>Young Engineers Program K-6 0432 593 564 2S & KL 3.15pm-4.40pm</p> <p>Maggies Art Class 0412 895 125 3C, 4C, 4B 3.15pm-5.00pm</p>

For all bookings please contact the companies directly.

The school has no details to accept bookings or payments



BAND PROGRAM

2021



Are you thinking about joining the band program in 2021?

We are seeking interest from students in Years 2-5.

Term 3 2020

Band presentation

Students who are interested in joining band in 2021 will attend an 'introduction to band' presentation and make 3 preferences for their instrument.

Term 4 2020

Instrument Try-out

Students are given the opportunity to try an instrument through weekly instrumental lessons before deciding if they'd like to join the Junior Band in 2021.

Term1 2021

Junior band starts

A weekly junior band rehearsal will be held every week from 7:45am-8:45am in the hall. Weekly instrumental tuition is compulsory for all band students.

Q. Where/when do I have my weekly instrumental lessons?

Lessons occur before or after school in classrooms.

Q. Do I need prior musical experience?

Anyone can join the band, whether you already play an instrument or not.

Q. How much does it cost?

Weekly GROUP lessons cost \$20 per student for 30 mins. Weekly individual lessons usually cost around \$30-35 per student for 30 mins. If you join the band in 2021, further band fees will apply.

Q. What instruments can I choose from?

Flute, clarinet, saxophone, trumpet, trombone, euphonium, keyboards, bass guitar and percussion (drum kit and extra percussion).

Q. Where can I hire an instrument?

You will be able to hire an instrument from the school. If you wish to buy an instrument, we recommend In Tune Music shop, Turramurra Music shop or Mall Music Macquarie.

Q. What do I need to commit to?

Band students need to be committed to weekly lessons, home practice, taking care of their instrument and being punctual to band rehearsals.

Q. Why join the band?

Playing in a band can contribute to a student's development of team spirit, self-esteem, social interaction, self-discipline and responsibility. Plus, it's a lot of fun!



Compulsory School Attendance

Information for parents

Education for your child is important and regular attendance at school is essential for your child to achieve their educational best and increase their career and life options. NSW public schools work in partnership with parents to encourage and support regular attendance of children and young people. When your child attends school every day, learning becomes easier and your child will build and maintain friendships with other children.

What are my legal responsibilities?

Education in New South Wales is compulsory for all children between the ages of six years and below the minimum school leaving age. The *Education Act 1990* requires that parents ensure their children of compulsory school age are enrolled at, and regularly attend school, or, are registered with the Board of Studies, Teaching and Educational Standards for homeschooling.

Once enrolled, children are required to attend school each day it is open for students.

The importance of arriving on time

Arriving at school and class on time:

- Ensures that students do not miss out on important learning activities scheduled early in the day
- Helps students learn the importance of punctuality and routine
- Give students time to greet their friends before class
- Reduces classroom disruption

Lateness is recorded as a partial absence and must be explained by parents.

What if my child has to be away from school?

On occasion, your child may need to be absent from school. Justified reasons for student absences may include:

- being sick, or having an infectious disease
- having an unavoidable medical appointment
- being required to attend a recognised religious holiday
- exceptional or urgent family circumstance (e.g. attending a funeral)

Following an absence from school you must ensure that within 7 days you provide your child's school with a verbal or written explanation for the absence. However, if the school has not received an explanation from you within 2 days, the school may contact you to discuss the absence.

Principals may decline to accept an explanation that you have provided if they do not believe the absence is in the best interest of your child. In these circumstances your child's absence would be recorded as unjustified. When this happens the principal will discuss their decision with you and the reasons why.

Principals may request medical certificates or other documentation when frequent or long term absences are explained as being due to illness. Principals may also seek parental permission to speak with medical specialists to obtain information to collaboratively develop a health care plan to support your child. If the request is denied, the principal can record the absences as unjustified.

Travel

Families are encouraged to travel during school holidays. If travel during school term is necessary, discuss this with your child's school principal. An *Application for Extended Leave* may need to be completed. Absences relating to travel will be marked as leave on the roll and therefore contribute to your child's total absences for the year.

In some circumstances students may be eligible to enrol in distance education for travel periods over 50 school days. This should be discussed with your child's school principal.





My child won't go to school. What should I do?

You should contact the principal as soon as possible to discuss the issue and ask for help. Strategies to help improve attendance may include a referral to the school's learning and support team or linking your child with appropriate support networks. The principal may seek further support from the Home School Liaison Program to develop an Attendance Improvement Plan.

What might happen if my child continues to have unacceptable absences?

It is important to understand that the Department of Education and Communities may be required to take further action where children of compulsory school age have recurring numbers of unexplained or unjustified absences from school.

Some of the following actions may be undertaken:

- Compulsory Schooling Conferences

You may be asked, along with your child, to attend a Compulsory Schooling Conference. The conference will help to identify the supports your child may need to have in place so they attend school regularly. The school, parents and agencies will work together to develop an agreed plan (known as Undertakings) to support your child's attendance at school.

- Application to the Children's Court

– Compulsory Schooling Order

If your child's attendance at school remains unsatisfactory the Department may apply to the Children's Court for a *Compulsory Schooling Order*. The Children's Court magistrate may order a Compulsory Schooling Conference to be convened.

- Prosecution in the Local Court School and Department staff remain

committed to working in partnership with you to address the issues which are preventing your child's full participation at school. In circumstances where a breach of compulsory schooling orders occurs further action may be taken against a parent in the Local Court. The result of court action can be the imposition of a community service order or a fine.

What age can my child leave school?

All New South Wales students must complete Year 10 or its equivalent. After Year 10, and up until they reach 17 years of age, there are a range of flexible options for students to complete their schooling.

Working in Partnership

The Department of Education and Communities recognises that working collaboratively with students and their families is the best way to support the regular attendance of students at school.

We look forward to working in partnership with you to support your child to fulfil their life opportunities.

If a student misses as little as 8 days in a school term, by the end of primary school they'll have missed over a year of school.

Further information regarding school attendance can be obtained from the following websites:

Policy, information and brochures:

Please visit the Department of Education's *Policy library*

The school leaving age:

Please visit the Department of Education's *Wellbeing and Learning* website

Do you need an interpreter?

Interpreting services are available on request, including for the hearing impaired. The Telephone Interpreter Service is available 24 hours a day, seven days a week on 131 450. You will not be charged for this service.

For further advice and questions contact your educational services team

T 131 536

Learning and Engagement

Student Engagement & Interagency Partnerships

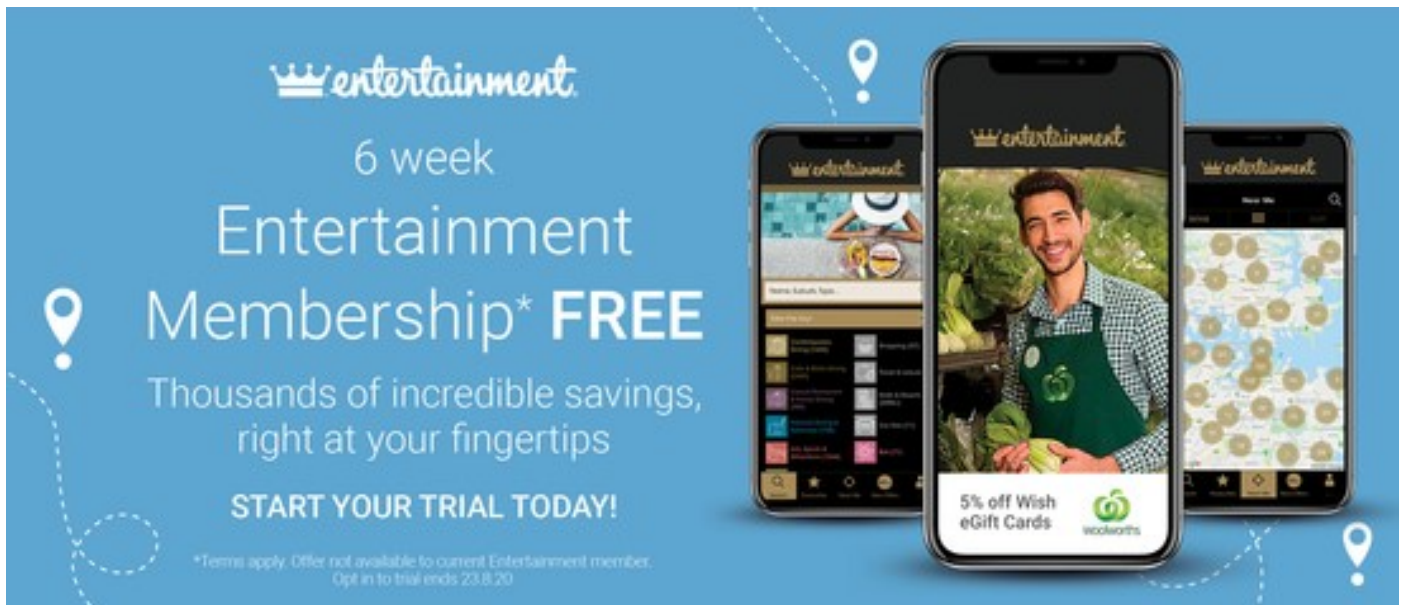
T 9244 512

www.dec.nsw.gov.au

© February 2015

NSW Department of Education and Communities

TRY the new Entertainment Digital Membership Today!



entertainment
6 week
Entertainment
Membership* **FREE**
Thousands of incredible savings,
right at your fingertips
START YOUR TRIAL TODAY!

*Terms apply. Offer not available to current Entertainment members. Opt in to trial ends 23.8.20

Until **Sunday 23rd August 2020** you can get 6 weeks for free!

Try it, use it and love it.

Thousands of incredible savings, right at your fingertips.

No payment details required.

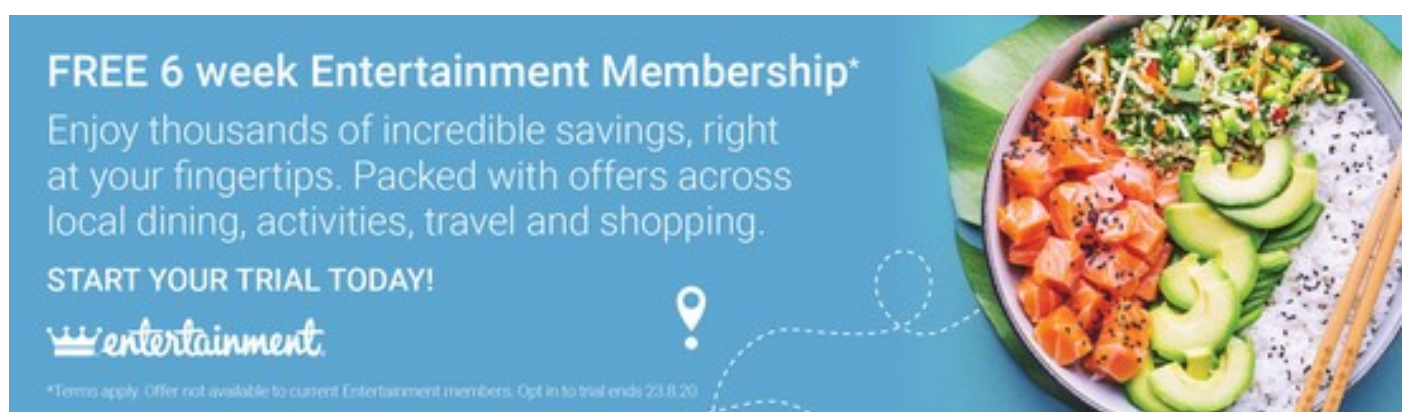
Simply go to the link below to activate your trial:

<https://www.entertainmentbook.com.au/orderbooks/9t35152>

Hurry only available until 23rd August!

Download the App and get started today!

Thank you for supporting our School.



FREE 6 week Entertainment Membership*
Enjoy thousands of incredible savings, right
at your fingertips. Packed with offers across
local dining, activities, travel and shopping.
START YOUR TRIAL TODAY!

entertainment

*Terms apply. Offer not available to current Entertainment members. Opt in to trial ends 23.8.20

BEFORE SCHOOL KINDY DANCE CLASS

Move and groove, get creative and have fun!

When: Monday's 8.00-8.45am

Where: Kent Road Public School, in the KF classroom

For more information and to enrol, please contact Jess at
jessicasilsby@gmail.com



Sweetness in Music
Success in Learning

dolce
school of music

Dolce is a professional music school offering:
Experienced Teachers from the Sydney Conservatorium of Music
Outstanding results in AMEB Exams and Eisteddfods
Performance Opportunities via Student Concerts



Call now to arrange your
FIRST FREE LESSON
*conditions apply

0423170271
enquiry@dolcemusic.com.au

www.dolcemusic.com.au



Redeem your **\$100**
CREATIVE KIDS VOUCHER
with Dolce

Advice for families - <https://education.nsw.gov.au/covid-19/advice-for-families>

Schools are operating full time while actively following health advice.

Schools continue to be safe, and operations are in line with Australian Health Protection Principal Committee (AHPPC) and NSW Health advice. All students should be learning on campus unless they are unwell or have a medical certificate to support their absence.

The activities that are permitted at school will be conducted in a way that is safe and appropriate in the current environment. Those that remain on hold will be reviewed during the term and will recommence when appropriate based on health and other relevant advice.

School attendance

Students should be at school unless:

- they have a medical certificate which states that they are unable to return to school due to an ongoing medical condition and the expected timeframe
- they are currently unwell.

In accordance with advice from NSW Health, parents and carers are reminded **NOT** to send children to school if they are unwell, even if they have the mildest flu-like symptoms. Schools will make arrangements for students who present as unwell or have flu like symptoms to be sent home.

NSW Health have requested that schools encourage anyone who is unwell or has even mild flu-like symptoms, to arrange to be tested through their local medical practitioner or one of the [COVID-19 clinics](#).

Students and staff with flu like symptoms will need to provide a copy of a negative COVID-19 test result before being permitted to return to school.

Schools are not required to conduct widespread temperature screening or mandate the wearing of a mask.

All schools will be vigilant when implementing infection control, physical distancing and personal hygiene protocols to protect the health and safety of students and staff.

Schools will promote the need to follow good hygiene practices such as:

- regularly washing hands
- avoiding sharing drinks or food
- coughing or sneezing into your elbow, or a tissue which should be discarded immediately
- filling water bottles from bubblers rather than using the bubbler directly.

All students and staff who reside in or have visited Victoria must have a [permit to enter NSW](#) and are required to comply with health restrictions relevant to their permit which may include the need complete the 14 day self-isolation period commencing the last

Latest COVID-19 case locations in NSW

Check the [Latest COVID-19 case locations in NSW](#) and follow the recommended actions if you have been in a location where there have been confirmed cases of COVID-19. We encourage members of the community to monitor this site. Please follow the relevant health advice if you have been at any of the locations at the specified dates and times.

The locations along with the times and dates of when the cases were identified can be found on the [NSW COVID-19 website](#).

School activities/school site usage

Additional safety measures for school activities have been put in place to minimize the risk of COVID-19 transmission in schools for the remainder of Term 3.

The following principles underpin these measures:

- Where possible, students will stay within their relevant cohort group (i.e. class, year group, or stage) for all learning activities within their school in order to limit close contacts to the relevant student cohort.
- Inter school activities must remain within the local community or zone. This applies to all interschool sport and physical activities, curriculum activities, arts activities and extra-curricular activities organised or sponsored by the school. Schools must not travel outside of their local community area. Metropolitan schools cannot travel outside their local

area or to regional areas. Regional areas cannot travel into metropolitan areas or other regional areas. Find your school's

sport zone.

- Only providers that are essential to the delivery of curriculum can continue to provide services and programs until further notice.
- Parents/carers and other non-essential visitors are not allowed on the school site.
- All group singing (choirs) and/or other chanting activities, as well as the use of wind instruments in group settings, are not permitted. Special arrangements are in place for HSC students.
- Year 11 and 12 students completing HSC subjects may continue to attend classes/activities relating to subjects only available on other campuses. All other students including Year 11 students not completing a HSC subject are not to attend other campuses for the remainder of Term 3. TAFE and other Vet programs may continue.
- * School formals, dances, graduation or other social events are not permitted Schools may hold a Year 12 assembly at school without parents to recognise the completion of school. Schools may consider delaying events until later in the year

Activities/site usage that can take place:

- Use the school library
- Engage in sporting activities within restrictions
- Canteens and uniform shops can open at principal's discretion
- All VET work placements can proceed subject to the availability of placement, appropriate risk assessments, and a COVID-19 Safety Plan must be in place. For any that can't proceed, refer to [the NESAs website](#).
- School based apprenticeships and traineeships can recommence once the relevant work-places are back in operation and a COVID-19 Safety Plan is in place.

Trade Training Centres can operate on school sites with a COVID-19 Safety Plan in place.

- School assemblies (limited to 15 minutes and no external visitors)
- Students may attend other schools for essential curriculum related reasons or placements (e.g. auditions or placement tests)
- Hydrotherapy pools can be used
- Incursions/external providers can provide activities that support delivery of curriculum (e.g. music tutors, sport skills development programs, science demonstrations, drama tutors, Healthy Harold).
- Day field trips to outdoor locations with no physical distancing requirements can take place (e.g. DoE Environmental Education Centres and sport and recreation facilities, trips to local river to collect water samples)
- Face-to-face TAFE attendance (see TAFE website for further information)
- School photos
- Department of Community and Justice services and programs
- Community use agreements involving adult attendance must have a COVID Safe Plan in place.
- SRE/SEE lessons within restrictions
- Work experience for students with a COVID Safe Plan in place.
- P&C meetings and events must be on-line only.
- Parent/teacher meetings will be online unless involving serious matters that require face to face discussion.

Activities on hold for Term 3

The following events will be reconsidered in Term 3. For now, these events must remain on hold.

- Kindergarten orientation
- Year 7 orientation has been delayed until Term 4.
- School camps
- Excursions (other than field trips explained above)
- Interstate excursions
- International excursions (cancelled until further notice)
- All students (except year 12 students) attending classes/activities relating to subjects only available on other campuses
- School or community run playgroups
- Face to face professional learning for staff. Refer to the Physical distancing guidelines.
- * Parent and carer attendance at assemblies and other school events
- * Parent and carer volunteers – e.g. parent reading helpers (note: canteen and uniform shop volunteers are permitted)

School-based activities that involve large gathering of adults. These include parent/community gatherings such as parent functions, working bees, fundraisers, school BBQs, large parent information evenings, and large on-site cultural events.

- Interschool sport, drama, debating and other events that are not within the local community or zone including gala days and regional sporting carnivals.
- Certain large arts and sports events are cancelled or delayed. Many large-scale arts events and sports tournaments rely upon feeder activities and have long-lead time organisational arrangements. As a consequence, a number of annual activities are planned to be delayed or cancelled (refer to Impacts on arts and sports events programs)

Activities that are cancelled

- Certain large arts and sports events are cancelled or delayed because they require feeder activities and have long-lead-time organisational arrangements. Please speak to your schools if you would like to know more.
- International excursions are cancelled until further notice.

Physical distancing

Physical distancing of students in schools is not required under the AHPPC guidelines.

All teachers, support staff and parents must maintain physical distance from each other (1.5m).

Parents should ensure school pick up and drop off arrangements enable them to physically distance from one another and from staff.

School cleaning and hygiene supplies

Your school will continue to receive additional cleaning in line with the AHPPC guidelines and advice from NSW Health. Target areas include high-touch areas and other hard surfaces, door handles, lockers, light switches and handrails in stairways and movement areas. There will also be additional cleaning of toilets and bubblers and topping up of supplies like soap.

Your school has received supplies of soap, hand sanitiser, toilet paper, paper towels, disinfectant wipes and personal protective equipment. The school is able to order more as needed.

Essential hygiene supplies

To support NSW schools during COVID-19 and help keep them safe, we've secured and dispatched a range of products including soap, hand sanitiser, toilet paper, disinfectant wipes and personal protective equipment.

Standard packs of hygiene products continue to be dispatched to schools. The packs include liquid soap, hand sanitiser, paper towels, surface spray, disinfectant wipes. Quantities are calculated on the number of habitable spaces at each school. Schools can continue to request supplies through the School Supplies email address.

Responding to COVID-19 cases

There is a clear plan in place for schools to respond to any suspected or confirmed cases of COVID-19 in our schools. We are working closely with NSW Health and will communicate with parents if a situation arises. Read more about our

[Response protocols for COVID-19 cases.](#)

Transport

Bus services to and from schools are scheduled to run as normal. For travel advice to and from school refer to the NSW [public transport service.](#)